

Sensor Protection

Flange Interface Adapters

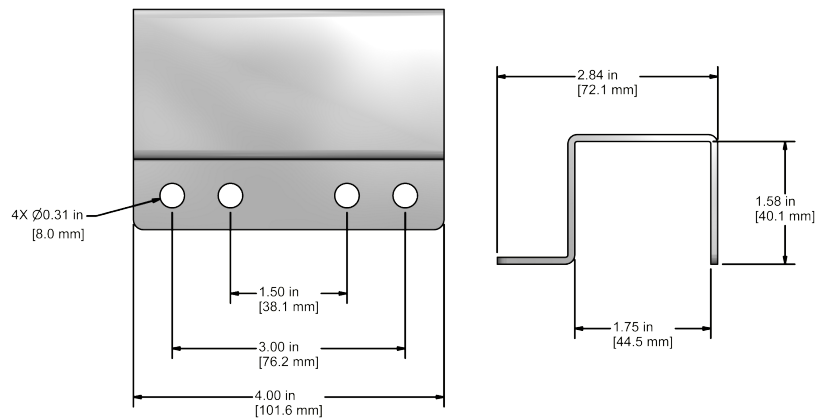
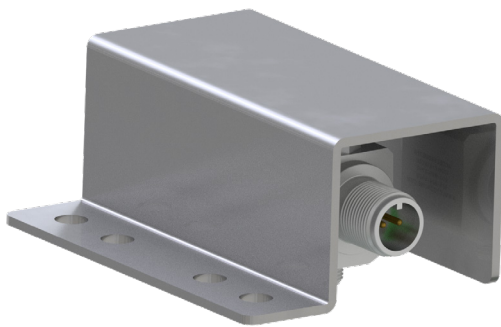


MH148-1A

Stainless Steel Sensor Protector for Side Exit Sensors

For protection from falling debris, moving machinery parts and other physical damage.

- Four Mounting Holes Spaced for Convenient and Stable Mounting Options
- Designed to Protect Sensors and Connectors from Hazardous Conditions
- Durable and Weather Resistant

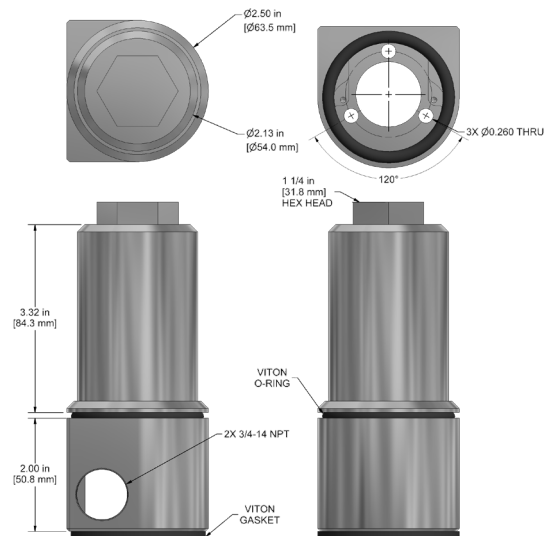


MH152-1A

Aluminum Sensor Protector for Top Exit Sensors

For protection from falling debris, moving machinery parts and other physical damage.

- Convenient Wrench Flats for Installation
- Designed to Protect Sensors and Connectors from Hazardous Conditions
- Durable and Weather Resistant



Backed by our Unconditional Lifetime Warranty

www.ctconline.com | sales@ctconline.com | 585-924-5900